

Serenity. Luxury. Perfection.

Accra View, Aburi



ACCRA VIEW

BY QWANDO

 **qwando**TM

Content

- Company Overview
- Property Overview
- Exterior and Interior.
- Property Floor Plan
- Amenities.
- Landmarks
- Payment Plan





Welcome to Contemporary Living

Experience the perfect balance between
bustling cityscape and mountain serenity.



Company Profile

“

We proudly offer three distinct portfolios: property development, exclusive home sales from other developers and office space refurbishment services for our valued clients.

Qwando Realty has a rich history rooted in the ever-evolving world of real estate. Originally, we started as Sales and Marketing agency, connecting clients with their dream homes, gaining invaluable insights into their needs and desires along the way. This profound understanding led to the expansion of our services, which now encompass the curating of contemporary and luxury homes to meet our clients unique requirements.

Our journey began with our clients' trust in us, entrusting us with any building-related tasks they needed, resulting in the addition of a new portfolio focused on office refurbishment.

This confidence and commitment have fueled our ongoing growth, and today, Qwando proudly offers three distinct portfolios: property development, exclusive home sales from other developers and office space refurbishment services for our valued clients.





Discover Accra View

“

Premium amenities, and unmatched convenience. Seamless access to roads, resorts, parks, restaurants, entertainment, and healthcare facilities.

Experience the perfect balance between bustling cityscape and mountain serenity. Elevate your lifestyle to new heights in our luxurious homes designed for those with a discerning taste and passion for luxury and contemporary living. Each residence boasts of modern layouts, premium amenities, and unmatched convenience.

Accra View has seamless access to roads, resorts, parks, restaurants, entertainment, and healthcare facilities. Join us at Accra View and elevate your lifestyle amidst luxury and natural beauty. Don't miss the opportunity to embrace this unparalleled living experience.



Don't miss the opportunity to embrace
this unparalleled living experience.





Discover Accra View

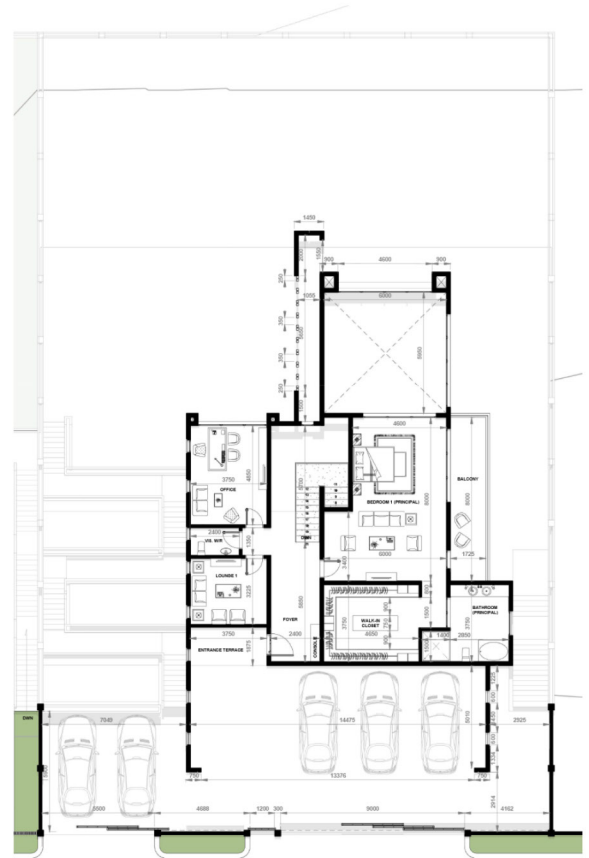






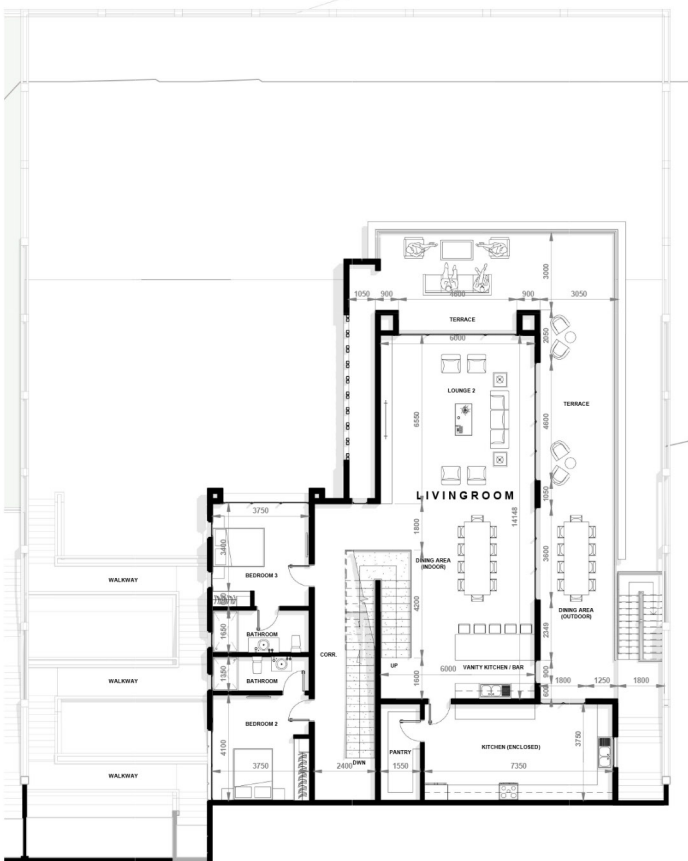
Planned to Perfection

Unparalleled in design, finish, and location. Stop dreaming and start living. Carefully detailed to combine optimum comfort and privacy. Well-lit
Well ventilated space, Premium quality flooring
Wide balconies, Split AC's with individual controls for all main rooms



ACCESS ROAD

GROUND FLOOR PLAN



This detailed floor plan illustrates the layout of the first floor, featuring a mix of indoor living spaces and extensive outdoor areas. The plan includes the following rooms and dimensions:

- Living Areas:** A large **LOUNGE** (6000) with a fireplace and a **HOME THEATRE** (3155) are centrally located. A **UTILITY ROOM** (3300) and **BEDROOM 4 (STAFF)** (3250) are situated near the kitchen area.
- Bedrooms:** The plan shows **BEDROOM 1** (3500), **BEDROOM 2** (3500), and **BEDROOM 3** (3500), each with an en-suite bathroom.
- Kitchen and Dining:** A large **KITCHEN** (4850) with a breakfast bar and a **DINING** area (3200) are part of the main living zone.
- Outdoor Spaces:** The property features a **SWIMMING POOL (INFINITY)** (5155) with a **POOL TERRACE** (9404) and a **POOL DECK** (8675). There is also a **KITCHEN YARD** (1548) and a **WALKWAY** (7300).
- Other Features:** The plan includes a **LOBBY** (6355), a **STORE** (1500), a **GUEST W.C.** (1200), and a **BALANCING TROUGH** (1045). The overall dimensions of the building footprint are 9238 by 9404.

SUB-BASEMENT PLAN

Amenities

Enjoy an inclusive living, social and nightlife lifestyle all under one roof.



4 bedrooms
ensuite



Master Suite



Living &
Dinning area



Outdoor dining



Wet kitchen + pantry



Vanity kitchen + bar



Home Gym



Infinity pool



Home cinema



2 lounges



Family area



Guest
washrooms



Study



Powder room



Boys quarters



Garage



Landmarks

Proximity to all locations that allows you to enjoy an active, productive and relaxing time with your family and friends.



Enjoy an inclusive living, social and nightlife lifestyle all in one place.

Landmarks

- Peduase Presidential lodge

- Schools

Beacon International school

- Shopping

Oyarifa mall

- Recreational

Peduase Valley Resort

Price and Payment plan

- **50% of the total amount up front** and the remaining 50% is distributed over the course of 2 years.





Mortgages

We are pleased to assist you in securing the best mortgage facilities by connecting you with our trusted network of mortgage partners.



Experience the perfect balance between
bustling cityscape and mountain serenity.

Contact us on:

 **0596994439**

0249222919

www.qwandorealty.com



qwando



qwandorealty